

Online, 17 & 23/06/2022 | rb.gy/zmlfrs



Towards ENVRI Community International Summer School
**WEBINARS ON DESIGNING AND DEVELOPING
DATA SERVICES FOR END USERS**

With the support of  ENVRI ERIC and  LifeWatch ERIC

Service validation & evaluation

Making sure your services are up to the task

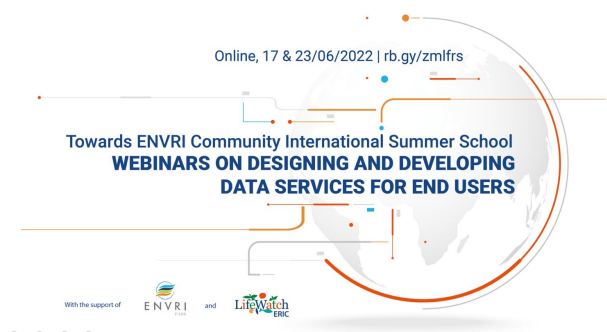
Mark van de Sanden (SURF), Yin Chen (EGI) & Maggie Hellström (ICOS)

June 17, 2022

Agenda

- Welcome & introduction
- Validating services & assessing their Technical Readiness Level - Mark van de Sanden
- Service evaluation: why & how - Yin Chen
- Evaluating ENVRI services: experiences from ENVRIplus - Maggie Hellström
- Question & Answers session
 - Participant questions & comments
 - Speaker panel questions:
 - What are the 3 most important aspects of the topic you presented
 - List the top challenge that you have faced dealing with your topic
 - Give on example of a really successful implementation/achievement related to your topic

Common notes document: <https://bit.ly/EISS-June17>



A bit about ENVRI-FAIR...

The overarching goal of ENVRI-FAIR is to advance the findability, accessibility, interoperability, and reusability (FAIRness) of the data and services offered by the ENVRI Cluster research infrastructures and to connect them to the emerging European Open Science Cloud.

Through our joint efforts, we will better understand the Earth system and eventually be able to better respond to all the challenges our planet faces.



ENVRI
FAIR

13 Research Infrastructures
37 partner institutes
4 subdomains

Started 1 January, 2019
Ends June 30, 2023

<https://envri.eu/home-envri-fair/>

ENVRI-FAIR School 2022

“Road to a FAIR ENVRI-Hub: Designing and Developing Data Services for End Users”

Lecce, Italy July 10-15

Training sessions:

1. Introducing the ENVRI-Hub (concept and architecture)
2. Learning to know your end users and their expectations: requirements elicitation
3. Creating high quality documentation and usage examples to support service end users
4. Developing services and fostering reusability & interoperability among them
5. Validating and evaluating your services

More info & registration (deadline June 26):

<https://www.lifewatch.eu/envri-community-international-summer-school-2022/>

Today's speakers



Mark van de Sanden
(SURF)
*Validating services &
assessing their TRL*



Yin Chen
(EGI)
*Service evaluation:
why & how*

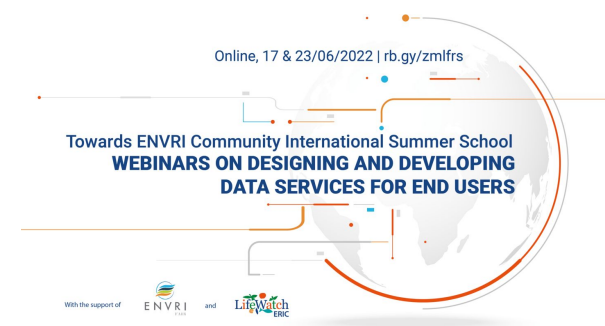


Maggie Hellström
(ICOS)
*Evaluating ENVRI services:
experiences from the
ENVRIplus*

Let's get started!

Question & Answers

- Participant questions & comments
- Speaker panel questions:
 - What are the 3 most important aspects of the topic you presented?
 - List the top challenge that you have faced dealing with your topic!
 - Give an example of a really successful implementation/achievement related to your topic



Thank you for participating today!

We hope that you enjoyed the webinar.

Please share your feedback with us here:

<https://bit.ly/EISSfeedback-June17>

